

**MONG RETHYTHY INVESTMENT
CAMBODIA OIL PALM CO. LTD. (MRICOP)**

RSPO Membership No: 1-0109-11-000-00

PLANTATION MANAGEMENT UNIT
MRICOP Palm Oil Mill & Estates
Choeung Kor Commune, Prey Nop District,
Sihanouk Province, Cambodia



Valued Quality. Delivered.

Public Summary Report
(abridged version)

"This report (including any enclosures and attachments) has been prepared for the exclusive use and benefit of the addressee(s) and solely for the purpose for which it is provided. Unless we provide express prior written consent, no part of this report should be reproduced, distributed or communicated to any third party. We do not accept any liability if this report is used for an alternative purpose from which it is intended, nor do we owe any duty of care to any third party in respect of this report."

Report No.: R9280/12-4 Mong Reththy Investment Cambodia Oil Palm Co. Ltd.
(MRICOP), Annual Surveillance Assessment (ASA-02) cum Extension of Scope

**ANNUAL SURVEILLANCE ASSESSMENT (ASA-02)
cum EXTENSION OF SCOPE ON RSPO CERTIFICATION**

PUBLIC SUMMARY REPORT

**MONG RETHYTHY INVESTMENT CAMBODIA OIL PALM CO. LTD.
(MRICOP)**

RSPO Membership No: 1-0109-11-000-00

**PLANTATION MANAGEMENT UNIT
MRICOP Palm Oil Mill & Estates**
Choeung Kor Commune, Prey Nop District, Sihanouk Province,
Cambodia

Certificate No:

Issued date:

Expiry date:

RSPO 928088

15 Aug 2012

14 Aug 2017

Assessment Type

Initial Certification (Main Assessment)

Extension of Scope

Annual Surveillance Assessment (ASA-01)

Annual Surveillance Assessment (ASA-02)

Extension of Scope

Annual Surveillance Assessment (ASA-03)

Annual Surveillance Assessment (ASA-04)

Re-Certification

Assessment Dates

24-28 Apr 2012

06 Aug 2012

22-25 Apr 2013

07-11 Jul 2014

Intertek Certification International Sdn Bhd (formerly known as Moody International Certification (Malaysia) Sdn Bhd)

6-L12-01, Level 12, Tower 2, Menara PGRM No. 6 & 8 Jalan Pudu Ulu, Cheras, 56100 Kuala Lumpur, Malaysia.

Tel: +00 (603) 9283 9881 Fax: +00 (603) 9284 8187 Email: ia.mysbaenquiry@intertek.com

Website: www.intertek.com

Report No.: R9280/12-4 Mong Reththy Investment Cambodia Oil Palm Co. Ltd. (MRICOP), Annual Surveillance Assessment (ASA-02) cum Extension of Scope

TABLE OF CONTENTS

Section	Content	Page No
1.0	SCOPE OF ANNUAL SURVEILLANCE ASSESSMENT	
1.1	Introduction	4
1.2	Location (address, GPS and map) mill, estates and hectarge	4
1.3	Description of supply base (fruit sources)	4-5
1.4	Year of plantings and cycle	5
1.5	Summary of Land Use – Conservation and HCV Areas	6
1.6	Other certifications held and Use of RSPO Trademarks	6
1.7	Organizational information/contact person	6
1.8	Tonnages Verified for Certification	6
1.9	Time Bound Plan	7
1.10	Abbreviations Used	8
2.0	ASSESSMENT PROCESS	
2.1	Assessment Methodology, Plan & Site Visits	9
2.2	Date of next scheduled visit	9
2.3	Qualifications of the Lead Assessor and Assessment Team	9
2.4	Certification Body	9
2.5	Process of Stakeholder consultation	11
3.0	ASSESSMENT FINDINGS	
3.1	Summary of findings	12
3.2	Status of Identified Noncompliance and Corrective Actions, Observations and Identified Positive Elements	12
3.3	Feedback Raised by Stakeholders and Findings	12
4.0	ASSESSMENT CONCLUSION AND RECOMMENDATION	
4.1	Acknowledgement of Internal Responsibility and Confirmation of Assessment Findings	13
4.2	Intertek RSPO Certification details for MRICOP	14-15
APPENDICES		
Appendix A	Assessment Plan	16-18
Appendix B	Maps of location – Mill, Estates, Conservation and HCV areas	19-22

Report No.: R9280/12-4 Mong Reththy Investment Cambodia Oil Palm Co. Ltd. (MRICOP), Annual Surveillance Assessment (ASA-02) cum Extension of Scope

1.0 SCOPE OF ANNUAL SURVEILLANCE ASSESSMENT (ASA-02)

1.1 Introduction

1.1.1 This Public Summary Report is the abridged version of the Annual Surveillance Assessment (ASA-02) cum Extension of Scope prepared for public notification, taking into consideration the protection of confidential and sensitive information of the client organization, which is consistent with the guiding principle specified by RSPO Certification System Standard. In the event, stakeholders, who require further details or clarification on any part of the content of the Public Summary Report, may contact RSPO Secretariat or Intertek Certification International. The full version of the assessment report has been submitted to RSPO Secretariat.

1.1.2 This Annual Surveillance Assessment (ASA-02) cum Extension of Scope was conducted on the MRICOP from 7-11 July 2014 to assess the organization's operations of the mill and its supply bases, for continued compliance against the RSPO Principles and Criteria (April 2013), Cambodian Local Indicators (CLI, July 2014) and RSPO Supply Chain Certification Standard (November 2011) for POM. This assessment also includes a review of the changes made by the PMU to comply with the requirements of the ratified new RSPO Principles and Criteria (effective 25 April 2013). It was found that the PMU is aware of the new RSPO Principles and Criteria and the transition period for compliance but has not yet make the necessary changes required.

The plantation management unit (PMU) or management unit is equivalent to a certification unit as defined in the RSPO Certification Systems Document. Each PMU consists of one mill and its supply bases which are made up of estates owned/managed by Mong Reththy Investment Cambodia Oil Palm Co. Ltd. (MRICOP).

1.2 Location (address, GPS and map) of palm oil mill and estates

MRICOP consists of one (1) palm oil mill, namely MRICOP Palm Oil Mill and three (3) estates as indicated in Table 1 below, which includes the addresses and GPS locations of the mill and estates. The location maps are provided in **Appendix B**.

Table 1: Address of Palm Oil Mill, Estates and GPS Location

Name	Address	GPS Reference	
		Latitude	Longitude
MRICOP Palm Oil Mill (Capacity: 30 MT/hour)	Head Quarters: #52, St. 598 Sangkat Boeung Kak II, Khan Toul Kork, Phnom Penh, Cambodia. Plantation Site & Office: Mong Reththy Investment Cambodia Oil Palm Co. Ltd., National Road 4, Monorum, Choeungkor, Prey Nop, Sihanouk Province, Cambodia.	10°54.50' N	103°49.65' E
Estate A (Tapoa)	National Road 4, Sangkat Cheung Kor, Khan Prey Nop, Preah Sihanouk Province, Kingdom of Cambodia.	10° 49' 04.2" N	103° 48' 33.1" E
Estate B (Svay)	National Road 4, Sangkat Cheung Kor, Khan Prey Nop, Preah Sihanouk Province, Kingdom of Cambodia.	10° 52' 15.5" N	103° 51' 05.3" E
Estate C (Anlong Krapeu)	National Road 4, Sangkat Cheung Kor, Khan Prey Nop, Preah Sihanouk Province, Kingdom of Cambodia.	10° 57' 34.9" N	103° 54' 28.2" E

Report No.: R9280/12-4 Mong Reththy Investment Cambodia Oil Palm Co. Ltd. (MRICOP), Annual Surveillance Assessment (ASA-02) cum Extension of Scope

1.3 Description of supply base (fruit sources)

The supply base, i.e. FFB sources to the POM at MRICOP PMU are from the abovementioned 3 estates. Estate A and Estate B are owned by MRICOP whilst Estate C is managed by MRICOP but owned by MRT-TCC Sugar Investment Co., Ltd (MTSI). MTSI's shareholders are the Thai Charoen Corporation Group (TCC) Group and Mong Reththy Group (MRT) on a 75% and 25% ownership basis. Both MRICOP and MTSI are under the joint ownership of TCC Group and MRT Group.

FFB supply from Estate A and Estate B (under MRICOP) had commenced since year 2000, whilst supply from Estate C had recently commenced since year 2011. The necessary documentation and public notification under the RSPO New Planting Procedures for the extension of plantation development and supply from Estate C was submitted to RSPO on 15 May 2012 and was approved without any issues forthwith for the previous surveillance assessment ASA-01. During the previous surveillance assessment ASA-01, Estate C was included as part of the supply base for certification and found to be in compliance.

An Extension of Scope was conducted as part of the surveillance assessment ASA-02 for the increase in planted hectareage due to additional New Planting for Estate C. Public notification under the RSPO New Planting Procedures for the extension of plantation development of Estate C was submitted to RSPO on 06 Jun 2014 and was approved without any issues.

The supply base i.e. FFB sources to the POM PMU are from the abovementioned 3 estates only. Verification done on site during this Assessment confirmed that there were no out growers / independent suppliers / smallholders involved in the supply of FFB to the said PMU.

Details of the planted hectareage for the FFB supply for MRICOP are as shown in Table 2 below.

Table 2: Estate Area Summary

Estate	Area Summary (ha) – Previous FY Jul 2012 / Jun 2013		Area Summary (ha) – Current FY Jul 2013 / Jun 2014	
	Certified Area	Planted Area	Certified Area	Planted Area
Estate A (Tapoa)	6,705.47	4,073.68	6,705.47	4,073.68
Estate B (Svay)	6,000.97	2,990.53	7,655.87	4,265.09
Estate C (Anlong Krapeu)	8,287.58	4,736.04	10,482.08	6,608.14
Total:	20,994.02	11,800.25	24,843.42	14,946.91

Notes:

1. This Annual Surveillance Assessment (ASA-02) covered the overall land use for oil palm plantation areas, and the identified Conservation areas including HCV areas marked out at the estates.
2. The estates sampled for this Annual Surveillance Assessment (ASA-02) have been selected based on their potential risks on social, environmental and biodiversity issues such as their proximity to forest reserves, hill sides, riparian zones and high conservation value areas.

Report No.: R9280/12-4 Mong Reththy Investment Cambodia Oil Palm Co. Ltd. (MRICOP), Annual Surveillance Assessment (ASA-02) cum Extension of Scope

1.4 Summary of plantings and cycle

The 3 estates have been developed beginning from 1997 and are still in the 1st cycle of planting. The year of plantings and age profiles for the respective estates is as per Table 3 below.

Table 3: Age Profile of Planted Oil Palm FY Jul 2013 / Jun 2014

Estate Name	Year of Planting	Cycle of Planting	Mature OP (ha) – Above 3 years	Immature OP (ha) – 3 years & below
Estate A	1997-2008, 2010	1 st	4,073.68	0.00
Estate B	1997-2009, 2010, 2012	1 st	2,991.31	1,273.78
Estate C	2008, 2009, 2010, 2011, 2012, 2013	1 st	2,730.39	3,877.75
		Total	9,795.38	5,151.53

1.5 Summary of Conservation and HCV Areas

The summary of Land Use, Conservation and HCV Areas as identified in MRICOP during this Annual Surveillance Assessment (ASA-02) in year 2014 is as shown in Table 4 below:

Table 4: Conservation and HCV Areas

#	Statement of Land Use (Ha) - Estate A, B and C	FY Jul 2012 / Jun 2013 (ASA-01) Hectarage – Ha	FY Jul 2013 / Jun 2014 (ASA-02) Hectarage – Ha
1	Planted Area (ha) – Oil Palm		
	- Mature	11,800.25	14,946.91
	- Immature	8,096.00	9,795.38
		3,704.25	5,151.53
2	Conservation Area (ha)		
	- comprising buffer zones along small streams, hilly areas, swampy and unplanted areas	1,617.72	2,051.41
3	HCV Area (ha)		
	- comprising buffer zones near forest reserves, water catchments, burial & religious sites	2.36	2.36

Notes:

- Significant portions of the land have been occupied by the local villagers and communities, for more than 5 years, which were left unplanted and maintained as such.
- Conservation areas are principally water bodies such as natural and dug up ponds and buffer zones along river tributaries and streams.
- The small HCV area is a Khmer soldiers' burial site in Estate C.

1.6 Other certifications held and Use of RSPO Trademarks

MRICOP PMU currently has no other certifications. The RSPO's trademarks and logo are not being used by the PMU audited. Instructions for use were provided and acknowledged by the PMU through a signed Memorandum of commitment agreeing to adhere to the latest "RSPO Rules on Communications & Claims".

Report No.: R9280/12-4 Mong Reththy Investment Cambodia Oil Palm Co. Ltd. (MRICOP), Annual Surveillance Assessment (ASA-02) cum Extension of Scope

1.7 Organizational information / Contact Person

Name: Mr. Witchai Kotartitam
 Designation: Executive Vice President (EVP)
 Full Address: Mong Reththy Investment Cambodia Oil Palm Co. Ltd
 #52, St. 598 Sangkat Boeung Kak II, Khan Toul Kork, Phnom Penh, Cambodia.
 Tel: 855-23-211 065
 Fax: 855-23-216 496
 Email: wichai.k@tccagroindustrial.com

Name: Mr. Sumate Pratumswan
 Designation: VP – Agricultural / Oil Palm
 Full Address: Monorom Village, Choeng Kor Commune, Prey Nop District, Preah Sihanouk Province
 Tel: (855-85) 903 551
 Fax: 855-23-216 496
 Email: sumatep@gmail.com

1.8 Tonnages Verified for Certification

The breakdown of all the tonnages of FFB from the supply base to the **POM at MRICOP** based on the reporting period for **FY Jul 2013 / Jun 2014** are as follows:

Table 5: Total FFB tonnages

#	Estate /Supplier	FFB Processed (MT)	Main Receiving Mill	Certified By
1.	Estate A	79,912.86	MRICOP POM	Intertek
2.	Estate B	38,187.52	MRICOP POM	Intertek
3.	Estate C	9,848.03	MRICOP POM	Intertek
Total for PMU estates		127,948.41		

Total annual volumes / tonnages of FFB supplied from the supply base to MRICOP POM during the previous assessment period, current surveillance period and next projected period are as follows:

Table 6: Comparison of Processed Tonnages

Estate / Supplier	FFB Processed in FY Jul 2012 / Jun 2013 Actual		FFB Processed in FY Jul 2013 / Jun 2014 Actual		FFB Processed for FY Jul 2014 / Jun 2015 Projected	
	MT	%	MT	%	MT	%
MRICOP estates - Certified	96,085.00	100	127,948.41	100	138,000.00	100
Other Suppliers (OCP) - Uncertified	0	0	0	0	0	0
Total	96,085.00	100	127,948.41	100	138,000.00	100
SCCS Model for POM	SG		IP*		IP	

* Note: At the last surveillance assessment ASA-01, the MRICOP Palm Oil Mill was assessed and found to comply with both the IP and SG Modules with the inclusion of Estate C as an owned/managed estate of the PMU. During this surveillance assessment ASA-02, Estate C is now integrated as part of the certified supply base and so was

Report No.: R9280/12-4 Mong Reththy Investment Cambodia Oil Palm Co. Ltd. (MRICOP), Annual Surveillance Assessment (ASA-02) cum Extension of Scope

assessed against the requirements for the Identity Preserved (IP) Module as specified in RSPO Supply Chain Certification Standard (SCCS) for CPO mill.

The **annual certifiable tonnages** of CPO and PK production by the PMU from the supply base as assessed during the previous assessment period, current surveillance period and next projected period are as follows:

Table 7: Comparison of Overall Certifiable Tonnages

POM	FY Jul 2012 / Jun 2013		FY Jul 2013 / Jun 2014		FY Jul 2014 / Jun 2015 Projected	
Total Certifiable FFB Processed (MT)	96,350.83		127,948.41		138,000.00	
Total Certifiable CPO Production (MT)	18,448.32	OER: 19.20%	23,054.11	OER: 18.02%	26,220.00	OER: 19.0%
Total Certifiable PK Production (MT)	3,362.98	KER: 3.50%	4,569.64	KER: 3.57%	4,899.00	KER: 3.55%
SCCS Model for POM	SG		IP		IP	

Note: Currently, the POM has established and maintained procedures for the book keeping and monitoring requirements for the CPO at the mill and was verified to be adopting the **Identity Preserved – IP'** model in accordance with the RSPO Supply Chain Certification Standard (SCCS) requirements.

1.9 Time Bound Plan for Other Management Units

At present, there are no other management units owned under MRICOP.

Report No.: R9280/12-4 Mong Reththy Investment Cambodia Oil Palm Co. Ltd. (MRICOP), Annual Surveillance Assessment (ASA-02) cum Extension of Scope

1.10 Abbreviations Used

CB	Certification Body	KER	Kernel Extraction Rate
CHRA	Chemical Health & Risk Assessment	LTA	Lost Time Accidents
CPO	Crude Palm Oil	MRICOP	Mong Reththy Investment Cambodia Oil Palm Co. Ltd.
CSDS	Chemical Safety Data Sheets	MSDS	Material Safety Data Sheets
CSPO	Certified Sustainable Palm Oil	MTCS	Malaysia Timber Certification Scheme
CSPK	Certified Sustainable Palm Kernel	NCR	Non-Conformance Report
EFB	Empty Fruit Bunch	NGO	Non-Government Organization
EHS	Environmental Health & Safety	OER	Oil Extraction Rate
EIA	Environmental Impact Assessment	OHS	Occupational Health & Safety
ETP	Effluent Treatment Plant	PEFC	Programme for the Endorsement of Forest Certification
FFB	Fresh Fruit Bunch	PK	Palm Kernel
GAP	Good Agriculture Practice	PMU	Plantation Management Unit
HCV	High Conservation Values	POM	Palm Oil Mill
Intertek	Intertek Certification International Sdn Bhd	POME	Palm Oil Mill Effluent
IPM	Integrated Pest Management	PPE	Personal Protective Equipment
ISCC	International Sustainability & Carbon Certification	SCCS	Supply Chain Certification Standard
IUCN	International Union for Conservation of Nature	SOP	Standard Operating Procedures

Report No.: R9280/12-4 Mong Reththy Investment Cambodia Oil Palm Co. Ltd. (MRICOP), Annual Surveillance Assessment (ASA-02) cum Extension of Scope**2.0 ASSESSMENT PROCESS****2.1 Assessment Methodology, Plan and Site Visits**

Intertek has initiated public communications and notifications and invited the relevant stakeholders before the assessment to provide feedback and comments on their concern (if any) on MRICOP regarding the environmental, biodiversity, community development and other relevant issues.

From 07 to 11 Jul 2014, the Assessment team of Intertek conducted the Annual Surveillance Assessment (ASA-02) cum Extension of Scope in which 2 out of the 3 estates of MRICOP namely Estate B and Estate C as well as the palm oil mill were assessed for compliance against the RSPO requirements. The Extension of Scope is for the increased in planted hectareage due to additional New Planting for Estate C. The number of estates sampled was based on a minimum sample of $0.8\sqrt{y}$ where y is the number of management sub-units and the selection was made based on their potential risks on social, environmental and biodiversity issues such as their proximity to forest reserves, hill sides, riparian zones and high conservation value areas.

During the on-site assessment, relevant documents and records, including Standard Operating Procedures (SOP), management plans, hectareage development, FFB, CPO and PK production, oil palm age profile, operational controls and measures, operational data and records, training records, etc. were reviewed and verified for compliance. The Assessment team using the process approach auditing technique covered the palm oil mill and estate operations, agricultural practices, pest management, pesticide and fertilizer application, occupational health and safety, social accountability, environment and other requirements. Stakeholders' interviews were conducted during the assessment and feedback obtained as part of information and evidence gathering. (See section 2.5 Process of stakeholder consultation).

MRICOP Palm Oil Mill was assessed against the requirements for the Identity Preserved (IP) Module as specified in RSPO Supply Chain Certification Standard (SCCS) for CPO mill. This part of the assessment covered the implementation of documented procedures, verification of processing and traceability of FFB into CPO and PK, and availability of records to demonstrate compliance against all the elements of the **Identity Preserved (IP) Module** in accordance with the RSPO Supply Chain Certification Standard (SCCS) requirements.

After completion of the on-site field assessment, Intertek also performed the evaluation of conformity against the RSPO Certification System requirements for CB. The assessment report, findings and associated documents were evaluated through an independent review by the Intertek Internal Evaluation Panel prior to submission of the Assessment Report to RSPO Secretariat for approval.

The details of the Assessment Plan (actual on-site) are provided in **Appendix A**.

2.2 Date of next scheduled visit

The next scheduled visit will be the Surveillance Assessment which will be carried out within a 12-month period after the Certification decision and approval date of this report.

2.3 Qualifications of the Lead Assessor and Assessment Team

Details of the Lead Assessor and Assessment Team and summary of their competency and skill may be obtained from RSPO or Intertek Certification International.

2.4 Certification Body

Intertek Certification International Sdn Bhd [formerly known as Moody International Certification (Malaysia) Sdn Bhd] is part of the Intertek Group, which is a worldwide technical services organization dedicated to reducing clients' risks by providing technical inspection services, management system certification in quality, environmental, occupational safety & health and product certification, RSPO P&C, RSPO SCC, ISCC, Marine Sustainability Chain-of-Custody,

Report No.: R9280/12-4 Mong Reththy Investment Cambodia Oil Palm Co. Ltd. (MRICOP), Annual Surveillance Assessment (ASA-02) cum Extension of Scope

MTCS and PEFC Chain-of Custody certification in applicable industry sectors including the agricultural and forestry sectors. Intertek operates globally providing clients with a wide-ranging technical inspection expertise and access to thousands of skilled specialists worldwide. Intertek Group's certification business is ranked in the top 10 worldwide, and is available globally offering certification across a wide range of industries.

2.5 Process of stakeholder consultation

Stakeholder consultations began with notification of the upcoming assessment through the websites of RSPO, MRICOP and Intertek. E-mails, facsimiles and letters of the same were sent to applicable stakeholders including government agencies, NGOs and local communities. Telephone enquiries were made prior to the actual assessment and stakeholder's response and feedback received were followed up accordingly.

During the assessment, stakeholders were interviewed and their feedbacks were recorded. Among the stakeholders consulted were workers, trade union leaders, women representatives; local community leaders, representatives of government departments / agencies and NGOs; external FFB suppliers, fertilizer suppliers and contractors.

Details on stakeholders' feedback, PMU response and Intertek verification / comments are provided in **section 3.3**.

Among the list of key stakeholders consulted was the following:

Government Ministries / Agencies (by emails)

- | | |
|--|--|
| 1. Ministry of Agriculture, Forestry & Fisheries | 9. Ministry of Land |
| 2. Ministry of Industry, Mines & Energy | 10. Ministry of Economy & Finance |
| 3. Ministry of Health | 11. Ministry of Rural Development |
| 4. Ministry of Wildlife Protection | 12. Ministry of Water resource and Meteorology |
| 5. Ministry of Women Affairs | 13. Department of Forestry, Cambodia |
| 6. Ministry of Environment | 14. Department of Wildlife & Biodiversity, Cambodia |
| 7. Ministry of Immigration | 15. Council for Agriculture and Rural Development (CARD) |
| 8. Ministry of Labour & Vocational Training | |

NGOs (by emails)

- | | |
|---|--|
| 16. World Wildlife Fund (WWF) Cambodia | 35. Human Resource and Rural Economic Development Organization (Hurredo) |
| 17. Conservation International, Cambodia | 36. Human Rights Vigilance of Cambodia (Vigilance) |
| 18. CEDEC, Cambodia | 37. Indigenous Community Support Organization (ICSO) |
| 19. Association of Protection Development for Cambodia Environment (APDCE) | 38. Khmer Community for Agricultural Development (KCAD) |
| 20. Cambodia Farmer Economic Development (CFED) | 39. Khmer Farmers Association (KFA) |
| 21. Cambodian Human Rights and Development Association (ADHOC) | 40. Khmer Institute for National Development (KIND) |
| 22. Cambodian Labour Organization (CLO) | 41. Legal Aid of Cambodia (LAC) |
| 23. Cambodian League for the Promotion & Defence of Human Rights (LICADHO) | 42. NGO Committee on the Rights of the Child (NGO-CRC) |
| 24. Cambodian Rural Economic Development Organization (CREDO) | 43. NGO Forum of Cambodia |
| 25. Cambodian Sanitation and Recycling Organization (CSARO) | 44. Hand of God, Cambodia |
| 26. Centre d'Etude et de Développement Agricole Cambodgien (CEDAC) Cambodia | 45. Wildlife Alliance, Cambodia |
| 27. Conservation International (CI) Cambodia | 46. Organization for Assistance of Children and Rural Women (CWARO) |
| 28. Cooperation for Development of Cambodia (Co-DeC) | 47. Provincial Governor of Sihanoukville |
| 29. Culture and Environment Preservation Association (CEPA) | 48. Urban Poor Women Development (UPWD) |
| 30. Development and Partnership in Action (DPA) | 49. Violence Against Women and Children of Cambodia (VAWCC) |
| 31. Fisheries Action Coalition Team (FACT) | 50. Wildlife Alliance Cambodia |
| 32. Gender and Development for Cambodia (GAD/C) | 51. World Wide Fund (WWF) Cambodia (Phnom Penh) |
| 33. Healthcare Centre for Children (HCC) | |

Others interviewed during on-site assessment

- | | |
|---------------------------|-------------------------|
| Gender Committee Members | School Principals |
| Workers representatives | Clinic doctors |
| Commune Head – Choeng Kor | Suppliers / Contractors |

Report No.: R9280/12-4 Mong Reththy Investment Cambodia Oil Palm Co. Ltd. (MRICOP), Annual Surveillance Assessment (ASA-02) cum Extension of Scope

Village Head – Monorum
Village Head – Ta Pov

Contractors (for field workers)

3.0 ASSESSMENT FINDINGS**3.1 Summary of findings**

The assessment confirmed that MRICOP demonstrated compliance against the RSPO Principles and Criteria (April 2013), Cambodian Local Indicators (CLI, July 2014) and RSPO Supply Chain Certification Standard (November 2011) for POM.

3.1.1 Supply Chain Certification Standards Findings - on CPO Mill

The Supply Chain model applied at MRICOP POM during this assessment is Identity Preserved.

3.1.2 Status on Supply Chain on POM:

Based on the documents and records presented during the on-site verifications made, it is concluded that the **MRICOP** POM has been able to comply with the requirements of the RSPO SCCS under the 'IP' model and is thus eligible for IP' trading for its palm products for year 2014.

3.2 Status of Identified Noncompliance and Corrective Actions, Observations and Identified Positive Elements

All previous non-conformances and observation have been closed off. During this assessment, there was Major NCR & 6 Observations. The root cause and corrective action taken by the company were reviewed and these had been accordingly incorporated into the full detailed report.

Identified Positive Elements

1. Social and community support provided in the clinics, schools and worship temples within the vicinity of the estates.
2. Long term employment and steady income for the local community and nearby villagers.
3. Overall contribution to the economic and social development of the people of Cambodia.

3.3 Feedback Raised by Stakeholders and Findings

Intertek had obtained some written and verbal feedback from the stakeholders on the environmental and social performance of MRICOP operations in the course of assessment and consultations. During the Annual Surveillance Assessment (ASA-02) cum Extension of Scope, all pertinent feedback issues were reviewed and followed up for verification and these had been accordingly incorporated into the full detailed report.

Report No.: R9280/12-4 Mong Reththy Investment Cambodia Oil Palm Co. Ltd. (MRICOP), Annual Surveillance Assessment (ASA-02) cum Extension of Scope**4.0 Assessment Conclusion and Recommendation**

Based on the findings above, Mong Reththy Investment Cambodia Oil Palm Co. Ltd., MRICOP had been able to demonstrate its compliance with the RSPO Principles and Criteria (Apr 2013), Cambodian Local Indicators (Jun 2014) and the RSPO Supply Chain Certification Standard (Nov 2011) for Palm Oil Mill.

Therefore, it is recommended that the certification of Mong Reththy Investment Cambodia Oil Palm Co. Ltd., MRICOP be approved and continued.

Full report signed off by:

Dr. Ooi Cheng Lee
Lead Assessor
Intertek Certification International Sdn Bhd

4.1 Acknowledgement of Internal Responsibility and Confirmation of Assessment Findings

This is to acknowledge and confirm the assessment visits described in this report and the acceptance of the contents and findings in this assessment report.

Full report acknowledged and signed off by:

Mr. Sumate Pratumswan
VP – Agriculture/Oil Palm
Mong Reththy Investment Cambodia Oil Palm Co. Ltd (MRICOP)

Report No.: R9280/12-4 Mong Reththy Investment Cambodia Oil Palm Co. Ltd. (MRICOP), Annual Surveillance Assessment (ASA-02) cum Extension of Scope

4.2 Intertek RSPO Certificate details for MRICOP

Certificate No:	RSPO 928088
Issue date:	15 Aug 2012
Expiry date:	14 Aug 2017
Organization	Mong Reththy Investment Cambodia Oil Palm Co. Ltd (MRICOP)
Address of Head Office:	#52, St. 598 Sangkat Boeung Kak II, Khan Toul Kork, Phnom Penh, Cambodia.
RSPO Membership No:	1-0109-11-000-00
Plantation Management Unit:	MRICOP
Address of POM:	National Road 4, Monorum, ChoeungKor, Prey Nop, Sihanouk Province, Cambodia
Standards:	RSPO Principles and Criteria (Apr 2013); Cambodian Local Indicators (2014); RSPO Supply Chain Certification Standards (Nov 2011) for the Palm Oil Mill.
Certification scope:	Production of Crude Palm Oil and Palm Kernels
Supply Chain model for CPO & PK:	Identity Preserved (IP)

Details of the Mill and Supply bases covered by this certificate and the tonnage approved are:

Name	Address	GPS Reference	
		Latitude	Longitude
MRICOP Palm Oil Mill (Capacity: 30 MT/hour)	National Road 4, Monorum, Choeungkor, Prey Nop, Sihanouk Province, Cambodia	10°54.50' N	103°49.65' E
Estate A (Tapoa)	National Road 4, Sangkat Cheung Kor, Khan Prey Nop, Preah Sihanouk province, Kingdom of Cambodia.	10° 49' 04.2" N	103° 48' 33.1" E
Estate B (Svay)	National Road 4, Sangkat Cheung Kor, Khan Prey Nop, Preah Sihanouk province, Kingdom of Cambodia.	10° 52' 15.5" N	103° 51' 05.3" E
Estate C (Anlong Krapeu)	National Road 4, Sangkat Cheung Kor, Khan Prey Nop, Preah Sihanouk province, Kingdom of Cambodia.	10° 57' 34.9" N	103° 54' 28.2" E

Report No.: R9280/12-4 Mong Reththy Investment Cambodia Oil Palm Co. Ltd. (MRICOP), Annual Surveillance Assessment (ASA-02) cum Extension of Scope

The **annual certifiable tonnages** of CPO and PK production by MRICOP from the supply base as assessed and verified during the current Annual Surveillance Assessment (ASA-02) (based on **FY Jul 2013 / Jun 2014** data) are detailed as follows:

POM	FY Jul 2012 / Jun 2013		FY Jul 2013 / Jun 2014		FY Jul 2014 / Jun 2015 Projected	
Total Certifiable FFB Processed (MT)	96,350.83		127,948.41		138,000.00	
Total Certifiable CPO Production (MT)	18,448.32	OER: 19.20%	23,054.11	OER: 18.02%	26,220.00	OER: 19.0%
Total Certifiable PK Production (MT)	3,362.98	KER: 3.50%	4,569.64	KER: 3.57%	4,899.00	KER: 3.55%
SCCS Model for POM	SG		IP		IP	

Report No.: R9280/12-4 Mong Reththy Investment Cambodia Oil Palm Co. Ltd. (MRICOP), Annual Surveillance Assessment (ASA-02) cum Extension of Scope

Appendix A:

Assessment Plan (Actual)

Date	Time	Assessors and Assessment Activity	
		Assessment Team	
07/07/2014 Day 1	9.00 – 1.00 pm	Travel to Sihanouk Province, Cambodia	
	1.00 pm -2.00 pm	Lunch Break	
	2.00 pm – 3.00 pm	Opening Meeting and Briefing at MRICOP– POM Office	
	3.00 pm – 6.00 pm	Review of Documentation and Follow up Issues based the Previous Assessment <ul style="list-style-type: none"> • Review of changes for compliance to revised P&C 2013 & CLI 2014 • Review of Time Bound Plan • Verification for compliance with rules on partial certification 	
	6.00 – 7.00 pm	Break	
	7.00 –10.00 pm	Team meeting and discussion	

Date	Time	Assessors and Assessment Activity			
		Assessment Team			
		Dr. Ooi Cheng Lee (OCL)	Augustine Loh (AL)	Chen Fai Kok (CFK)	Reaksa Rous (RR)
08/07/2014 Day 2	9.00 am – 10.00 am	Meeting & Briefing at MRICOP (Palm Oil Mill Office)			
	10.00 am – 1.00 pm	Site assessment at MRICOP Palm Oil Mill (RSPO P&C: 1~8) <ul style="list-style-type: none"> • P1 Transparency • P2 Laws & regulations • P3 Economic & Financial Viability • P5 Environmental, Conservation & Mill including HCV • P6 Employees, Individuals & Communities incl. Gender Issues • P8 Continual Improvement • SCC for POM 	Site assessment at MRICOP Palm Oil Mill (RSPO P&C: 1~8) <ul style="list-style-type: none"> • P1 Transparency • P2 Laws & regulations • P3 Economic & Financial Viability • P5 Environmental, Conservation & Mill including HCV • P6 Employees, Individuals & Communities incl. Gender Issues • P8 Continual Improvement • SCC for POM 	Site assessment at MRICOP Palm Oil Mill (RSPO P&C: 1~8) <ul style="list-style-type: none"> • P4 Best Practices at Estates & Mill • P7 New Plantings • P8 Continual Improvement 	Site assessment at MRICOP Palm Oil Mill (RSPO P&C: 1~8) <ul style="list-style-type: none"> • Assisting as Local Expert in Legal, Social, environmental, Agricultural indicators
	1.00 pm – 2.00 pm	Lunch			
	2.00 pm –6.00 pm	Continue site assessment at MRICOP POM	Continue site assessment at MRICOP POM	Continue site assessment at MRICOP POM	Continue site assessment at MRICOP POM
	6.00 pm– 7.00 pm	Break			
	7 – 10 pm	Team meeting and discussion			

Report No.: R9280/12-4 Mong Reththy Investment Cambodia Oil Palm Co. Ltd. (MRICOP), Annual Surveillance Assessment (ASA-02) cum Extension of Scope

Date	Time	Assessors and Assessment Activity			
		Assessment Team			
9/07/2014 Day 3	9.00 am – 1.00 pm	Dr. Ooi Cheng Lee (OCL) Site assessment at Estate C (RSPO P&C: 1~8) <ul style="list-style-type: none"> • P1 Transparency • P2 Laws & regulations • P3 Economic & Financial Viability • P5 Environmental, Conservation & Mill including HCV • P6 Employees, Individuals & Communities incl. Gender Issues • P8 Continual Improvement 	Augustine Loh (AL) Site assessment at Estate C (RSPO P&C: 1~8) <ul style="list-style-type: none"> • P1 Transparency • P2 Laws & regulations • P3 Economic & Financial Viability • P5 Environmental, Conservation & Mill including HCV • P6 Employees, Individuals & Communities incl. Gender Issues • P8 Continual Improvement 	Chen Fai Kok (CFK) Site assessment at Estate C (RSPO P&C: 1~8) <ul style="list-style-type: none"> • P4 Best Practices at Estates & Mill • P7 New Plantings • P8 Continual Improvement 	Reaksa Rous (RR) Site assessment at Estate C (RSPO P&C: 1~8) <ul style="list-style-type: none"> • Assisting as Local Expert in Legal, Social, environmental, Agricultural indicators
	1.00 pm – 2.00 pm	Lunch			
	2.00 pm - 6.00 pm	Continue site assessment at Estate C	Continue site assessment at Estate C	Continue site assessment at Estate C	Continue site assessment at Estate C
	6.00 pm – 7.00 pm	Break			
	7 – 10 pm	Team meeting and discussion			

Date	Time	Assessors and Assessment Activity			
		Assessment Team			
10/07/2014 Day 4	9.00 am – 1.00 pm	Dr. Ooi Cheng Lee (OCL) Site assessment at Estate B (RSPO P&C: 1~8) <ul style="list-style-type: none"> • P1 Transparency • P2 Laws & regulations • P3 Economic & Financial Viability • P5 Environmental, Conservation & Mill including HCV • P6 Employees, Individuals & Communities incl. Gender Issues • P8 Continual Improvement • SCC for POM 	Augustine Loh (AL) Site assessment at Estate B (RSPO P&C: 1~8) <ul style="list-style-type: none"> • P1 Transparency • P2 Laws & regulations • P3 Economic & Financial Viability • P5 Environmental, Conservation & Mill including HCV • P6 Employees, Individuals & Communities incl. Gender Issues • P8 Continual Improvement • SCC for POM 	Chen Fai Kok (CFK) Site assessment at Estate B (RSPO P&C: 1~8) <ul style="list-style-type: none"> • P4 Best Practices at Estates & Mill • P7 New Plantings • P8 Continual Improvement 	Reaksa Rous (RR) Site assessment at Estate B (RSPO P&C: 1~8) <ul style="list-style-type: none"> • Assisting as Local Expert in Legal, Social, environmental, Agricultural indicators
	1.00 pm – 2.00 pm	Lunch			
		Continue site	Continue site	Continue site	Continue site assessment

Report No.: R9280/12-4 Mong Reththy Investment Cambodia Oil Palm Co. Ltd. (MRICOP), Annual Surveillance Assessment (ASA-02) cum Extension of Scope

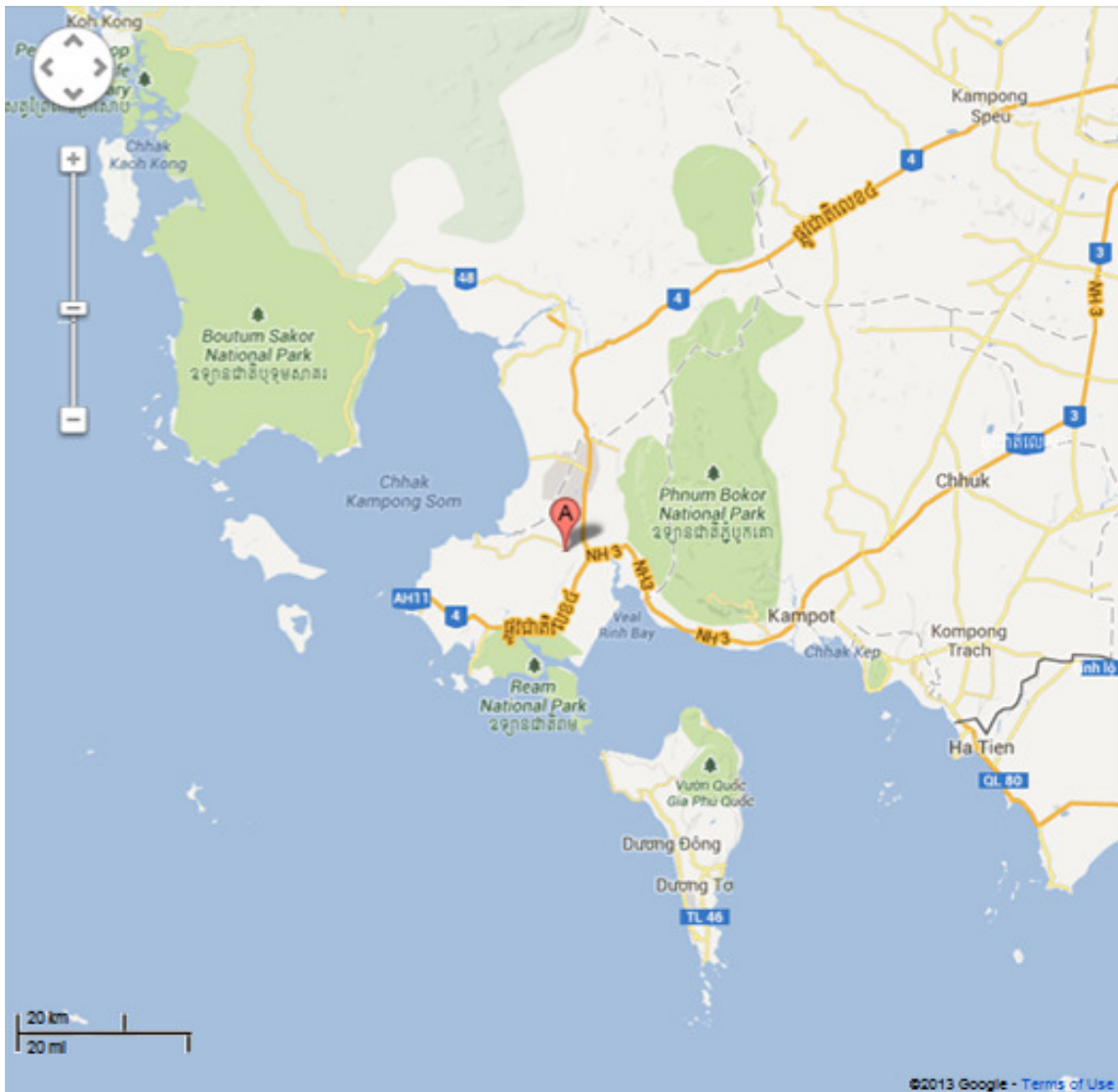
		assessment at Estate B	assessment at Estate B	assessment at Estate B	at Estate B
	6.00 pm– 7.00 pm	Break			
	7 – 10 pm	Team meeting and discussion			

Date	Time	Assessors and Assessment Activity
		Assessment Team
11/07/2014 Day 5	9.00 am – 1.00 pm	Stakeholder / Consultations: <ul style="list-style-type: none"> • Contractors • Suppliers • Transporters • NGOs • Government Department / Agencies • Local Community # Mandatory for each category to be audited
	1.00 pm – 2.00 pm	Lunch
	2.00 pm -3.00 pm	Preparation of Closing Meeting
	4.00 pm– 5.00 pm	Team Meeting and Discussions with MRICOP Management Representative
	5 – 6 pm	Closing Meeting & Briefing at Palm Oil Mill Office

Report No.: R9280/12-4 Mong Reththy Investment Cambodia Oil Palm Co. Ltd. (MRICOP), Annual Surveillance Assessment (ASA-02) cum Extension of Scope

Appendix B-1:

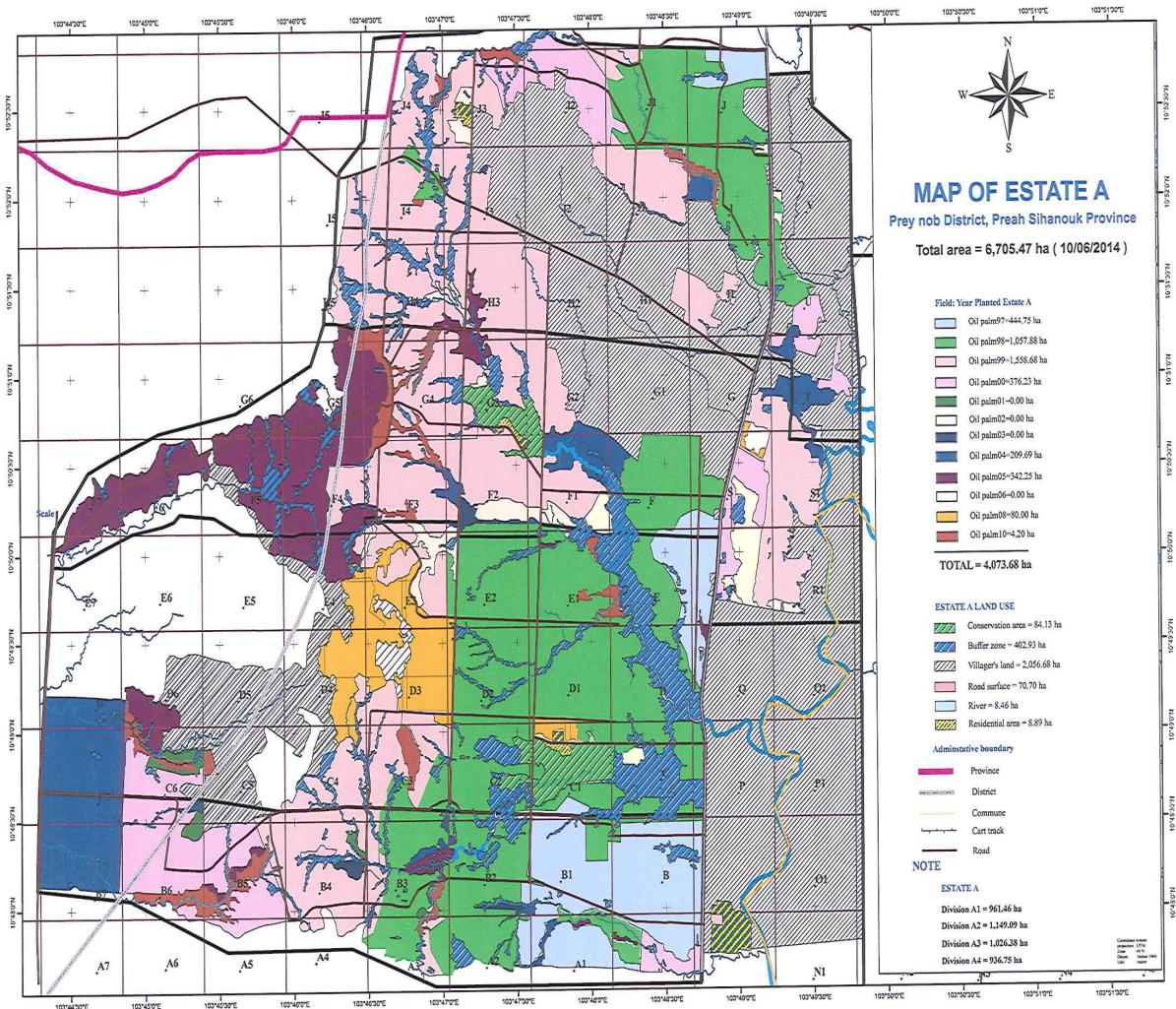
Location Map of MRICOP Choeung Kor Commune, Prey Nop District, Sihanoukville, Cambodia (Map Scale 1: 20km)



Report No.: R9280/12-4 Mong Reththy Investment Cambodia Oil Palm Co. Ltd. (MRICOP), Annual Surveillance Assessment (ASA-02) cum Extension of Scope

Appendix B-2:

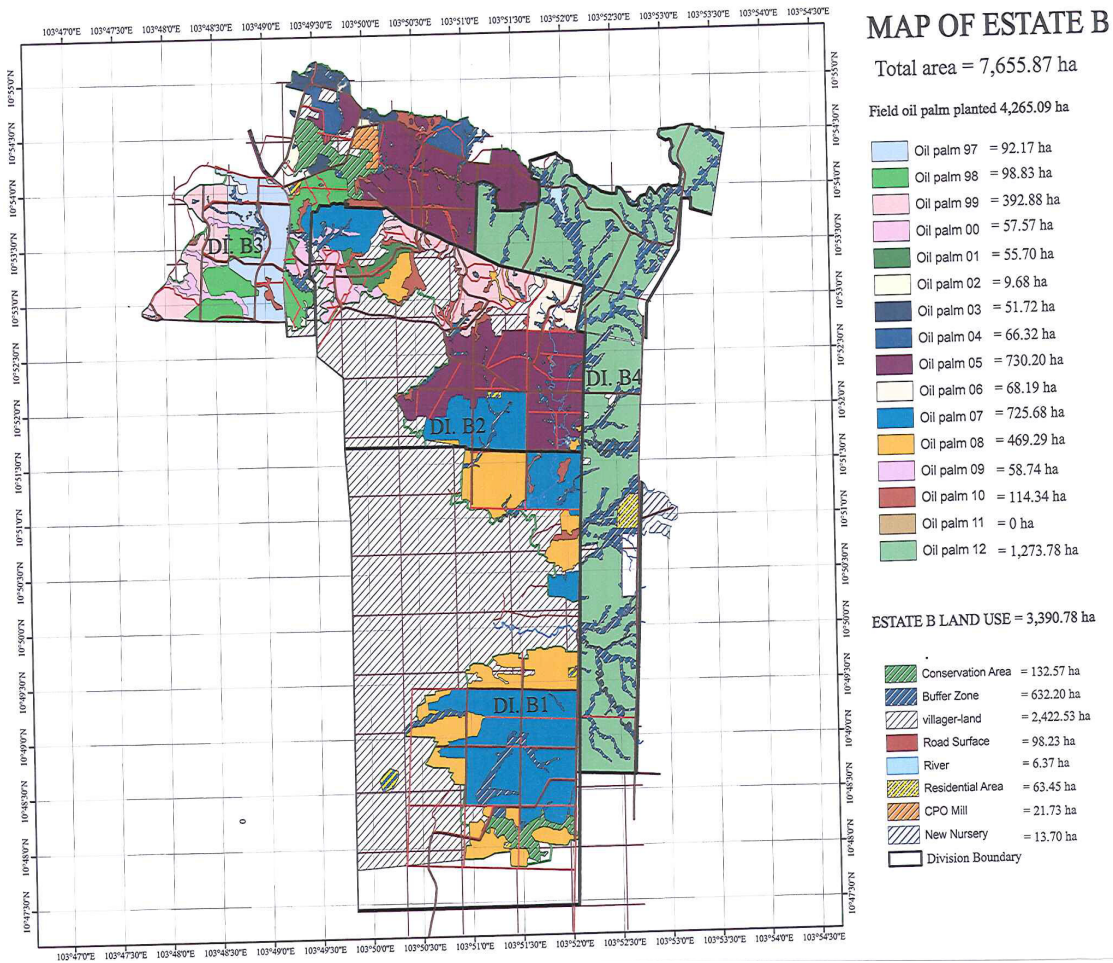
MRICOP Land Use Map - Estate A



Report No.: R9280/12-4 Mong Reththy Investment Cambodia Oil Palm Co. Ltd. (MRICOP), Annual Surveillance Assessment (ASA-02) cum Extension of Scope

Appendix B-3:

MRICOP Land Use Map - Estate B



Report No.: R9280/12-4 Mong Reththy Investment Cambodia Oil Palm Co. Ltd. (MRICOP), Annual Surveillance Assessment (ASA-02) cum Extension of Scope

Appendix B-4:

MRICOP Land Use Map - Estate C

MTSI LAND USE MAP (Estate C)

